

THE LATEST NEWS IN CYBER SECURITY



Now a CREST accredited company for penetration testing services in Australia, RSM provides expert services across cyber security assurance and advisory and risk consulting.

Penetration Testing, Information and Cyber Security Risk, Privacy, Digital Forensics and Incident Response, Security Transformation and Cloud Security

THE POWER OF BEING UNDERSTOOD
AUDIT | TAX | CONSULTING

KEY CONTACT



Darren Booth
National Head of
Security and
Privacy Risk
Services

T: +61 3 9286 8158

E: darren.booth@rsm.com.au

www.linkedin.com/in/darrenbooth-rsm



Agenda

current & emerging trends

digital information footprint

cyber boundary

governance & resilience

auditing approaches

audit plan

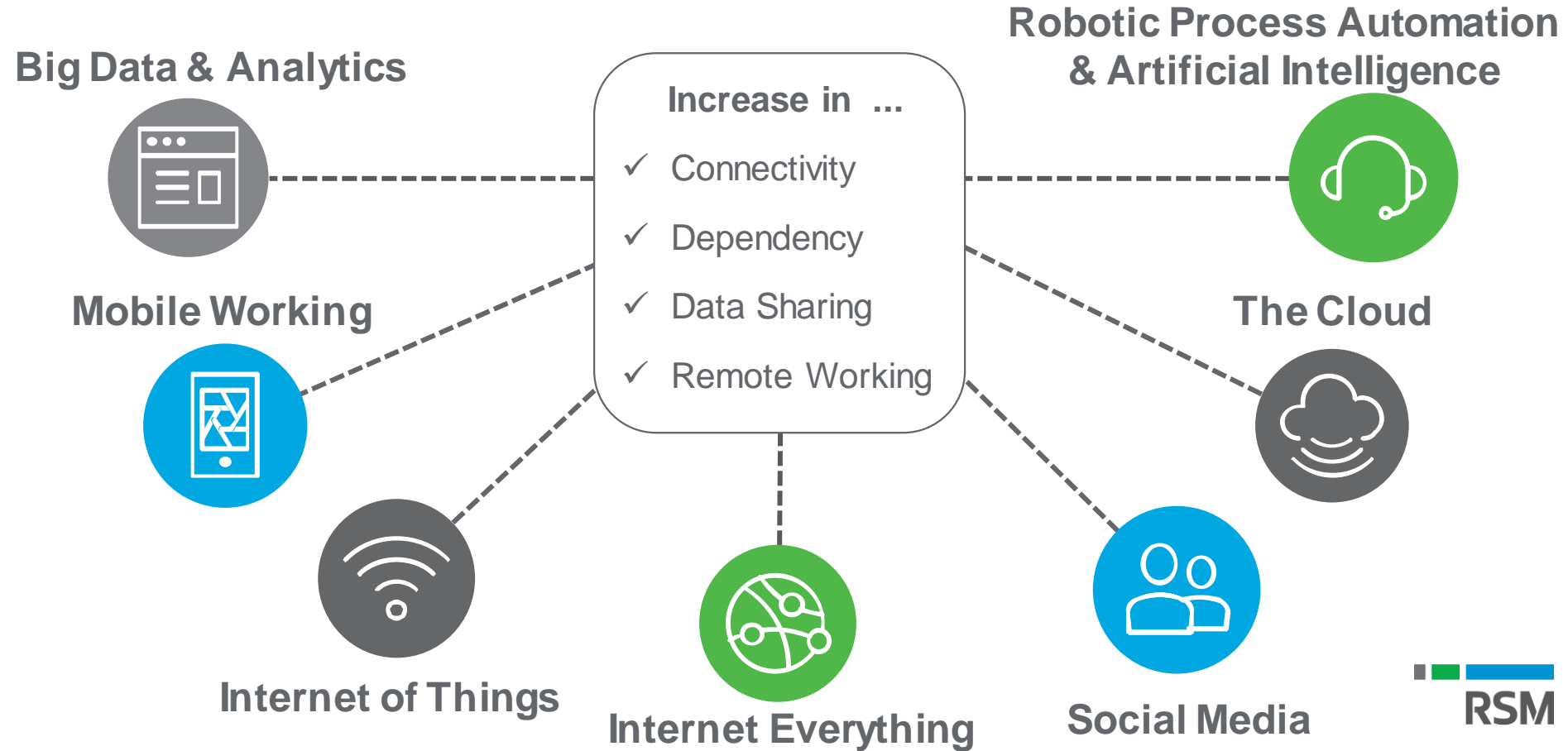


There are only two types of companies: those that have been hacked, and those that will be.

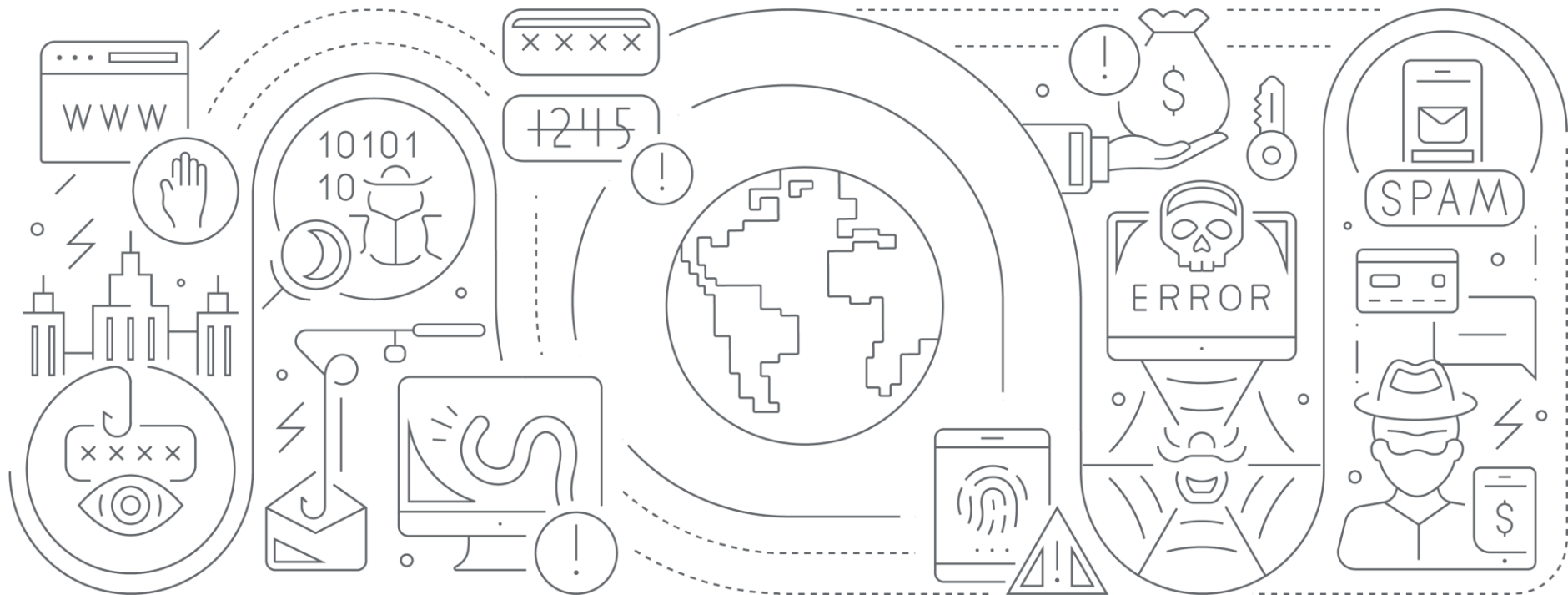
Merging into: those that have been hacked and will be again.

Robert Mueller (March 2012)

Current IT Trends



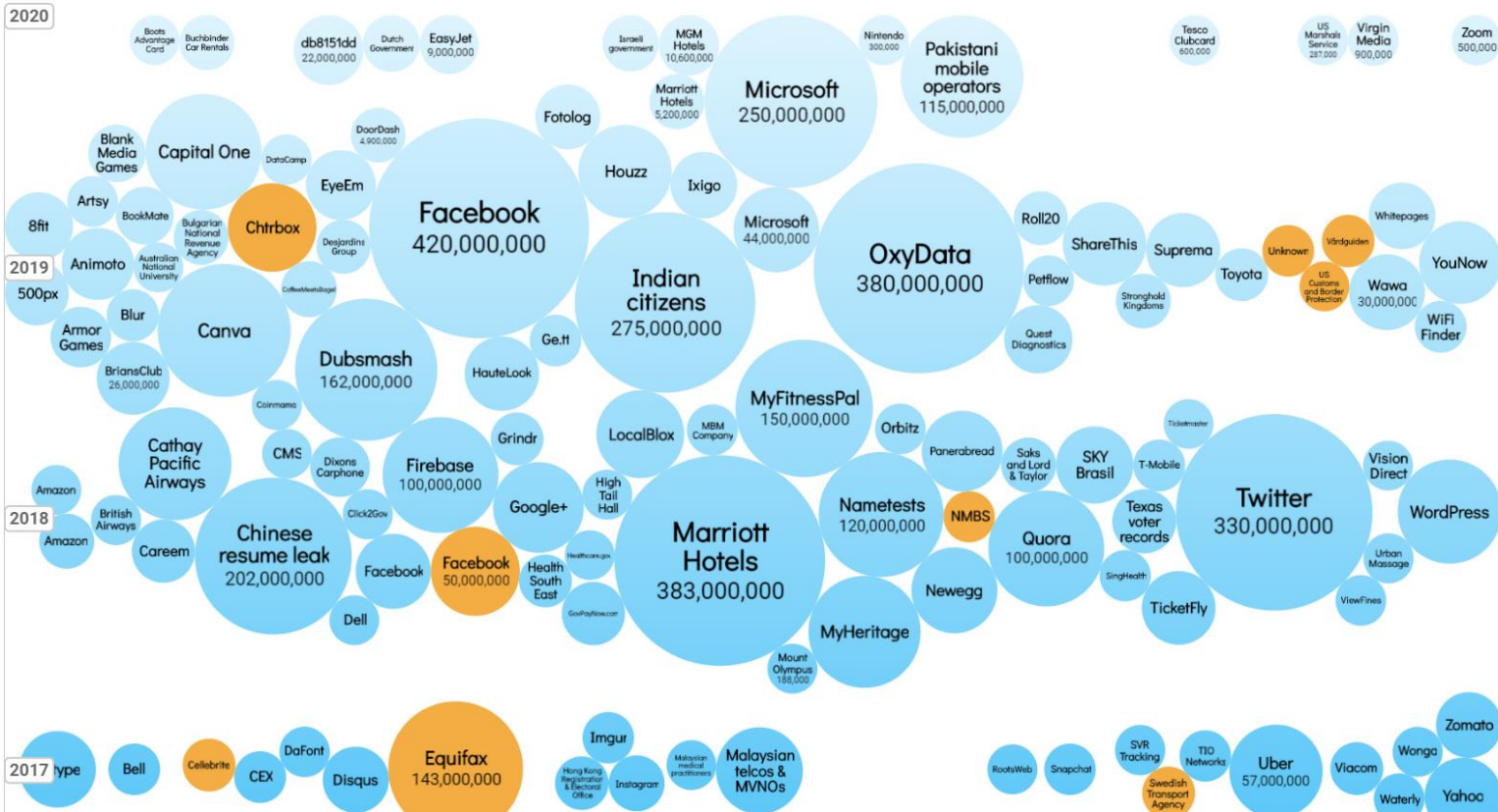
Cyber Security Risks



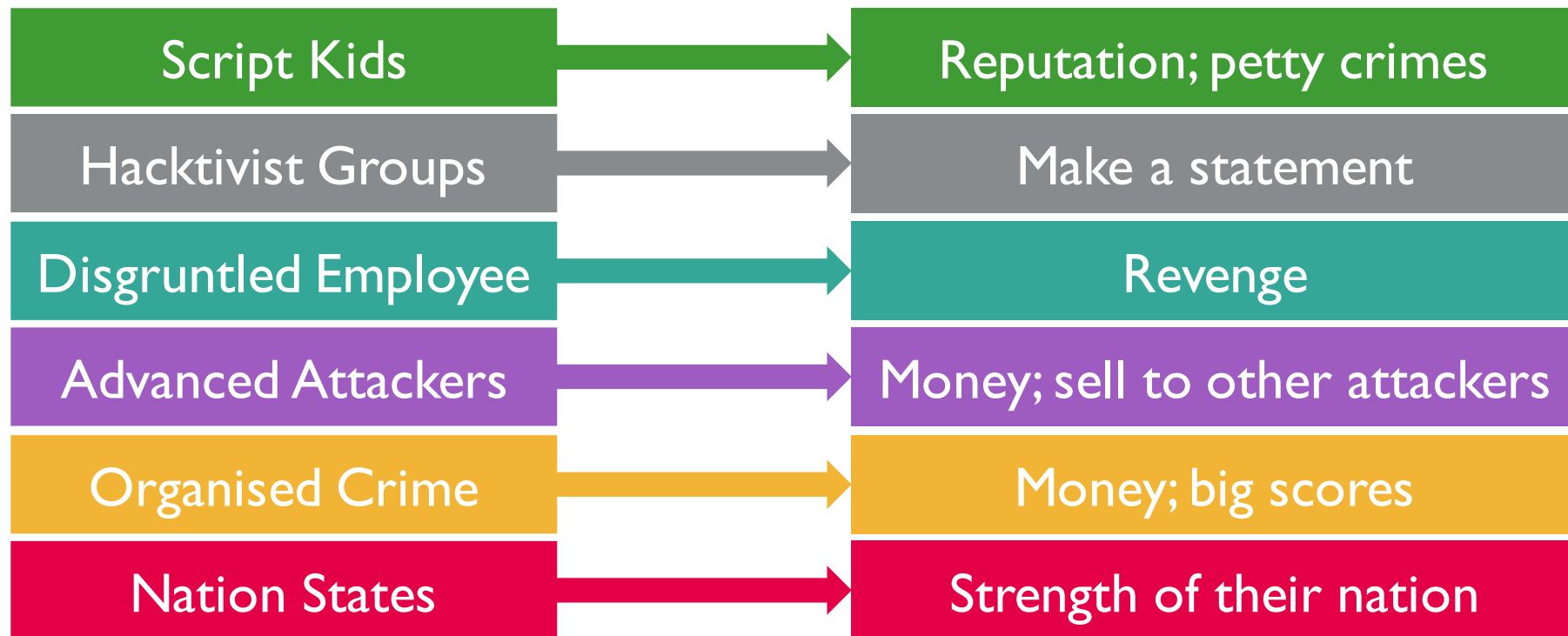
Your organisation's digital information footprint



What is the scale of the issue



Threat actors



What has changed?

Ransomware is the new payload of choice

Ransomware: 3.8m
attacks in 2015 rose to
205m in 2018

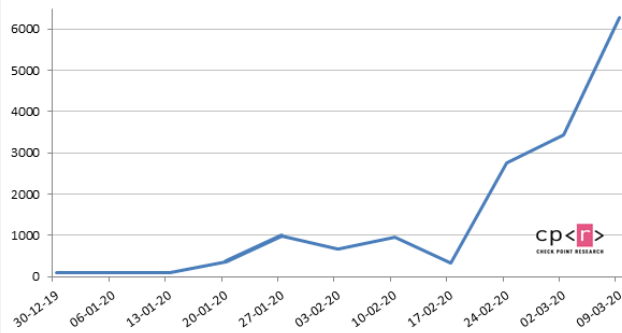
Social (people) attacks
used in 51% of ransom-
ware cases in 2018

Australia is ranked fifth in
the number of exposed
records by country.

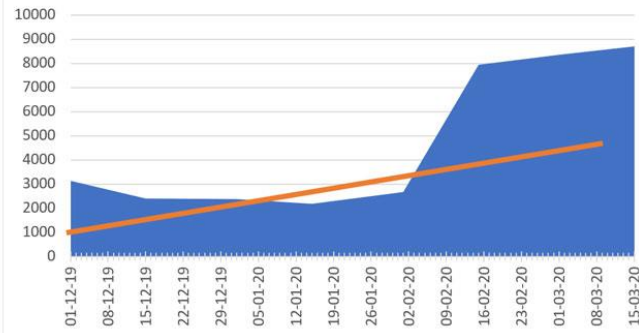
Source: Malwarefox Ransomware Report 2019
<https://www.malwarefox.com/ransomware-statistics-infographic/>

What has changed with COVID-19

Coronavirus Domains Registered Weekly



Spike in Email Based Attacks



6

SCAM

myGov

audio FaceTime info

Text Message
Today 9:03 am

We have issued a new video communication regarding COVID-19 restrictions and how to protect yourself against the coronavirus: <https://covid19-guidelines.com/>

NativeOne Products

Coronavirus Discount! 10% off ALL products

The more you buy the more you save!

<https://vsell.io/seller/NativeOne>

Ends March 14, 2020

Product	Price	Availability
NativeOne Private Hosting	50\$ - 1 Month Private File Hosting	5 available
NativeOne Zip Bypass	75\$ - 1 Zip Build .ZIP Bypass (.zip)	5 available
NativeOne Public Hosting	25\$ - 1 Month Public File Hosting	8 available
NativeOne Private mLNK Stub	100\$ - Private Stub Private mLNK Stub	2 available

Re: Covid-19 Payment Relief

Address spoofing **AusGov** gov.au>

To Recipients

Payment relief form.rar
297 KB

Australian Government

Official Australian Government agency emblem

Good Morning

Attached is the instruction and form on how to claim your payment relief .

Regards

Signature block of Australian Government official

RE: IT COVID-19 Report

To All Staff Employees,

Due to the recent COVID-19 outbreak, IT Helpdesk is currently working on advance Staff portal in order to keep our staff/employee on task & organized schedules. All Staff/Employee are required to login Staff Portal for updates.

To access the portal, Click on [STAFF PORTAL](#).

Failure to update your Staff portal, you will be deleted from our database.

Sincerely,
IT Helpdesk
©2020 All rights reserved

Remote working environment changes

Desktops and BYOD

- No longer behind the corporate firewall and protection, reliant on home security.

Rushed Virtual Private Network (VPN) & Firewall changes

- Capacity to support the workforce
- Legacy systems | • Change management

Data loss prevention

- People at home act different to in the office
- Increased use of cloud storage / sharing

'Noise' in monitoring tools

- Phishing attacks
- More remote access

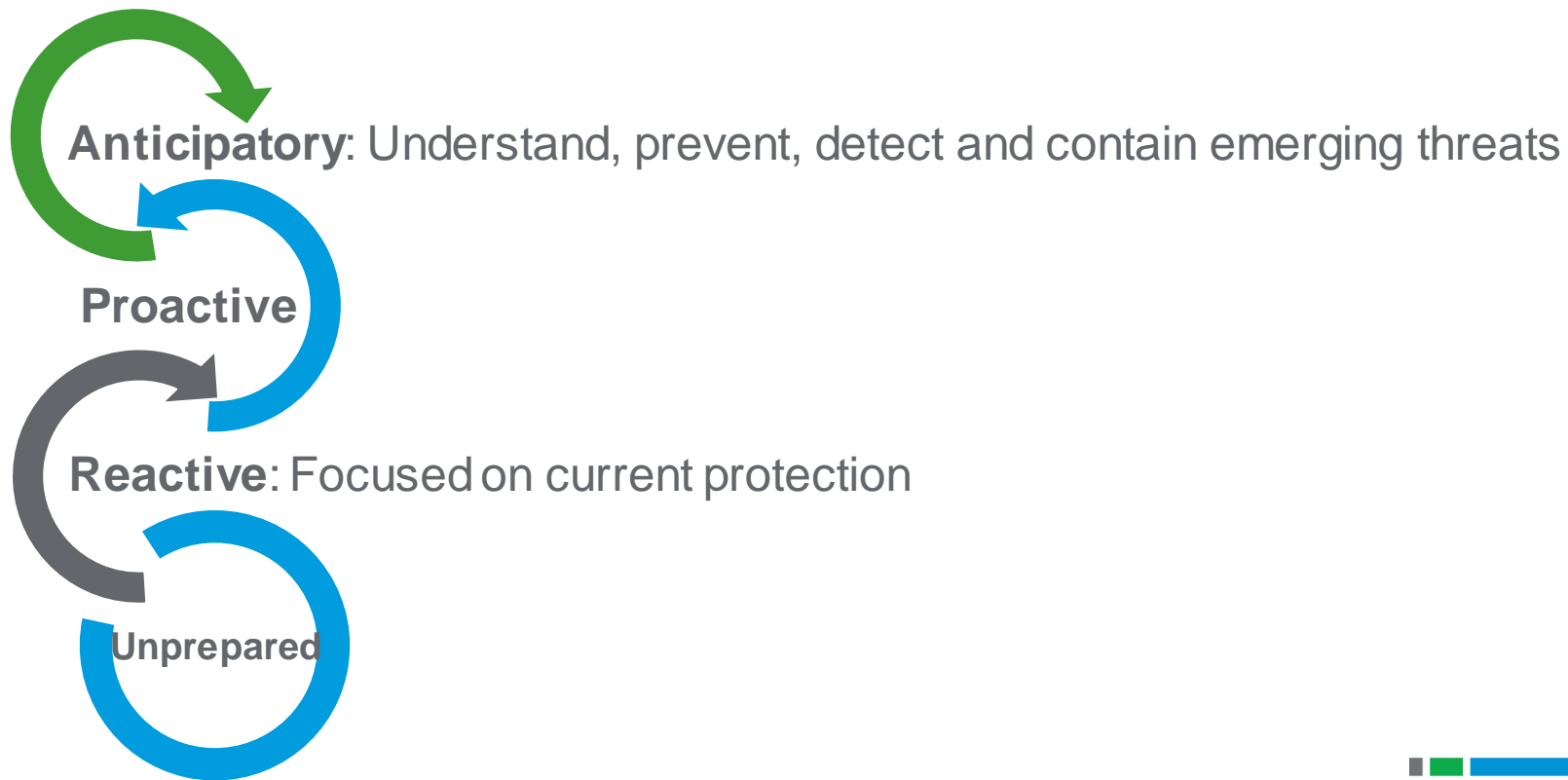
Third party resources

- Rushed roll-out by vendors
- Use of new tools without usual training



Cyber resilience refers to an organisation's ability to continuously deliver the intended outcome despite adverse cyber events.

Approach aligned to maturity



Control types

PREVENTIVE

- Reduce the likelihood of a successful attack
- Minimise impact

DETECTIVE

- Detect attacks
- Alert the organisation to the situation

CORRECTIVE

- Respond to an incident
- Recover the organisation

GOVERNANCE

- Manage cyber security
- Monitor improvements and success

Cyber Resilience Activities

PREVENTIVE

- Patching
- Privileges
- Multi-factor authentication
- Email & Web
- Hardening

DETECTIVE

- Reduce user friction
- Cyber threat intelligence
- Monitoring, detection & escalation

CORRECTIVE

- Security Incident Response
- Business Continuity
- Disaster Recovery

GOVERNANCE

- Culture
- Training & awareness
- Communication
- Current assessment & roadmap

Standards and Guidelines



Australian Government
Information Security Manual

Strategies to Mitigate
Cyber Security Incidents

Essential Eight Explained



NIST Special Publication 800-53



Cyber security audit plans

Cyber Security Maturity Assessment

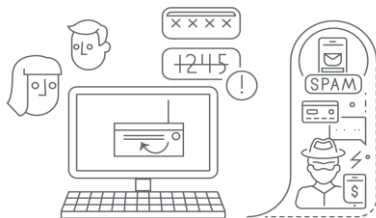
Cyber Threat Risk Assessment & Cyber Security Control Framework

Email and website filtering & threat prevention

Security Awareness & Social Engineering Tests – Phishing, vishing, physical

Third Party / Vendor Security Risk Management

Board Cyber Security Reporting



Penetration Testing – External, Internal, Wireless, Web Application, APIs

Privileged Access Management – Using tools like ADRecon

Firewall Configurations – Using tools like Nipper

Configuration Hardening – Source Code, CIS Benchmark, Office365, unsupported servers

Cyber Threat Intelligence – due diligence of exposed data in deep and dark web

Vulnerability Management – Using scanning tools like Tenable Nessus

Data Loss Detection and Data Discovery (email, cloud, system leakage)

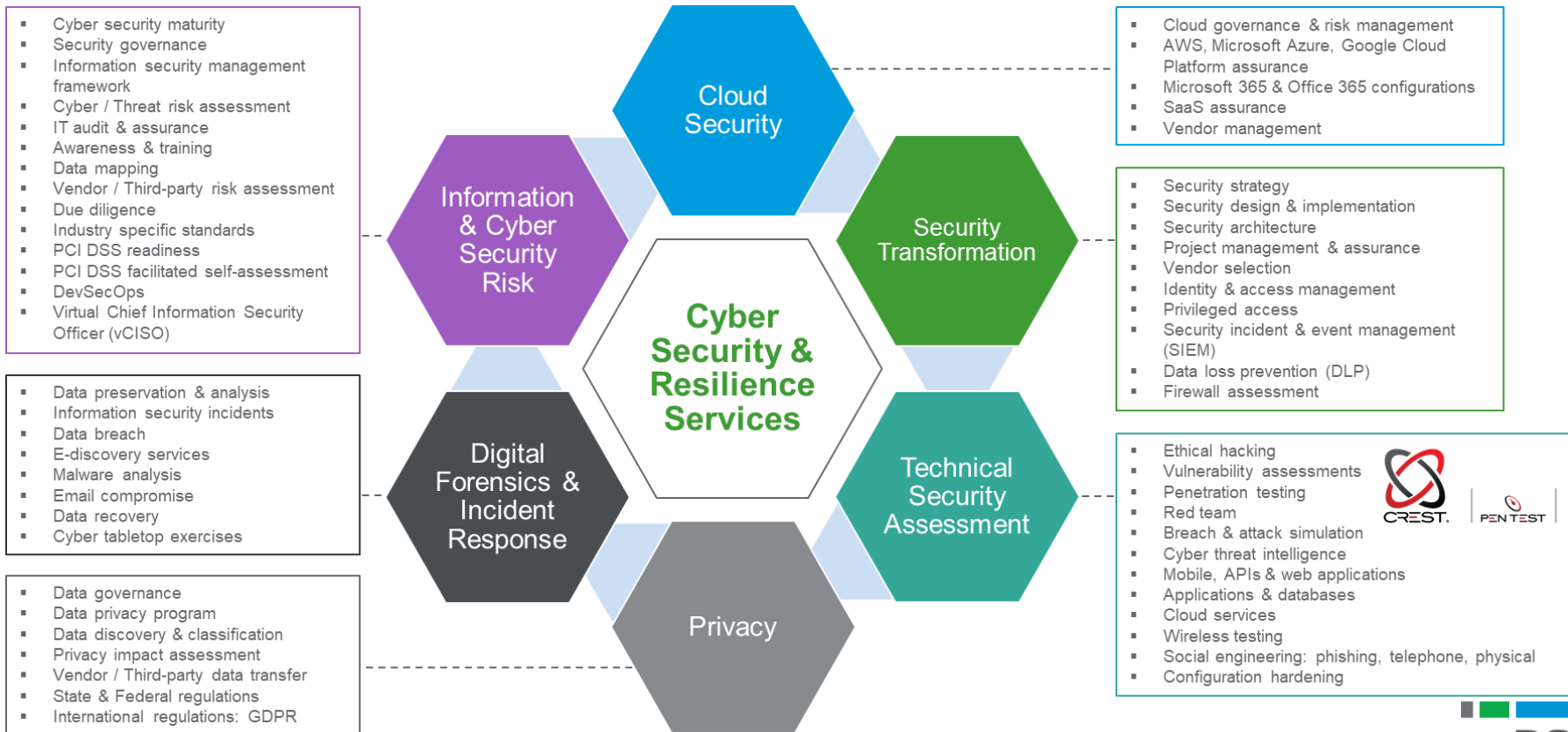
Security Event Monitoring – Audit, Log, Monitor, Review (Mitre Att&ck)

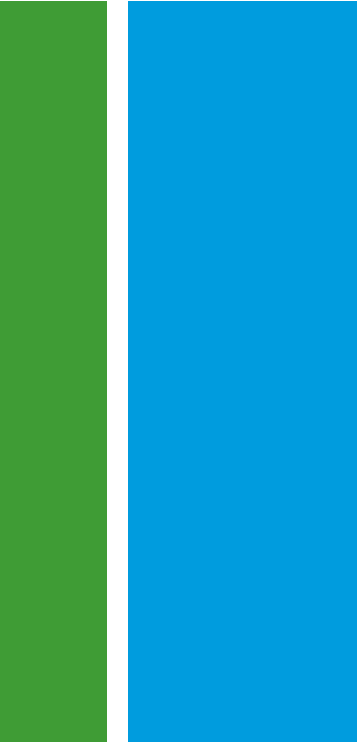
Information Asset Classification (& Segmentation)

Questions
and answers?



Cyber Security Services





This presentation is intended as general information only and should not be considered as advice on any matter and should not be relied upon as such. The information in this presentation has been prepared without taking into account any individual objectives, financial situation or needs. No member of RSM Australia, no any of their employees or directors gives any warranty of accuracy or reliability nor accepts any liability in any other way including by reason of negligence for any errors or omissions contained in the presentation, to the extent permitted by law.

Liability limited by a scheme approved under Professional Standards legislation.