

THE POWER OF BEING UNDERSTOOD

AUDIT | TAX | CONSULTING



IMPLEMENTING CHANGE IN THE FARM OFFICE

Jo Gilbert

Director

RSM Albany

joanne.gilbert@rsm.com.au

9841 2766

Who are we?



Australia's largest mid-tier accounting firm



>1,200 staff across 33 offices



Established over 95 yrs ago in regional WA



26 regional offices across Australia

Why Cloud & Digital?



**Real time
information**



**Cashflow
management**



Efficiency



**Informed
decision
making**



**Anywhere
anytime**



Lodgement







- Sync bills, receipts & invoices to Xero
- Create rules for coding
- Automate data entry
- Save copy of source document



- Data synced from Hubdoc
- Cashbook with bank feeds
- Lodge BAS directly to ATO
- Payroll inc STP
- Tracking of cropping + sheep
- Xero to Xero
- Xero to Bills



- Budgets
- Forecasts
- Scenarios
- Trackers
 - Cropping
 - Livestock
- Production margins
- Real time variance reporting
- Rolling plan



Is Xero designed for farmers?

Subscription Pricing



Figured

Version	Retail	RSM
Payroll Only	\$10.00	\$10.00
Starter	\$25.00	\$22.50
Standard	\$50.00	\$45.00
Premium 5	\$65.00	\$58.50
inc in Xero Standard and above		
Financial Farmer	\$60.50	\$54.50

Annual Cost (example)

Software	Features	Price (est total)
Xero	Cashbook Payroll (up to 4 employees)	\$540
Hubdoc	All features	-
Figured	Budget Scenarios Trackers Reporting	\$654
Est Total		\$1,194



What about my historical data?

How can RSM help you?

Fixed fee upfront quotes provided



Review current software + advise options



Convert cashbook data + extract reports



Setup of software



Reconcile opening balances



Conversion of budgets



Training

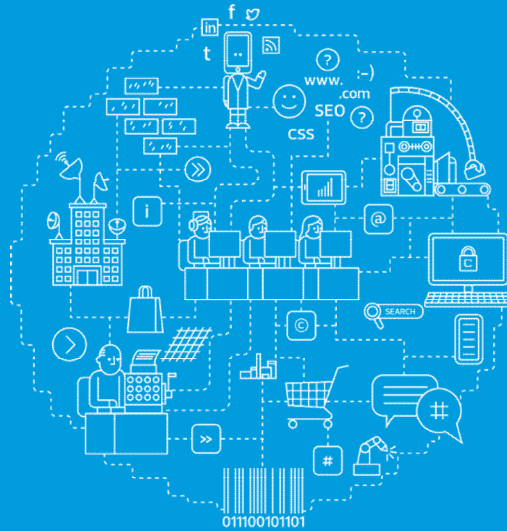


Ongoing health checks + process improvements



Provide insights into new software developments + suitable apps

Questions
and answers?



Collaboration. Understanding. Ideas and
insight.

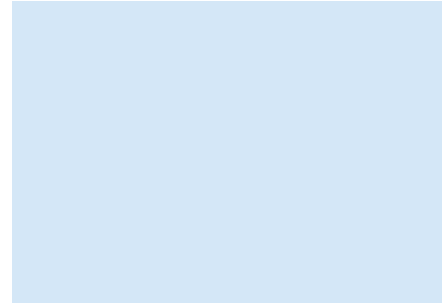
RSM Albany Team



Jo Gilbert

Director

joanne.gilbert@rsm.com.au



Jodie Sounness

Senior Accountant

jodie.sounness@rsm.com.au

